

Complete the following work by yourself. You may compare your work with a partner after all have finished.

1. Draw a distance-time graph that represents the following story.

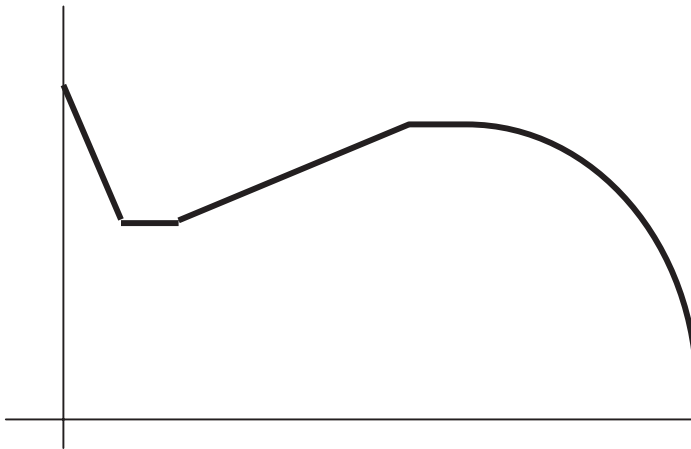
A golden retriever puppy was chasing a ball and bringing it back to its owner. On one particular throw, the puppy chased the ball, brought it half way back, and then sat down and stared at a frog before finally picking up the ball and bringing it slowly back to the master. The puppy always sits by the owner until the ball is thrown.



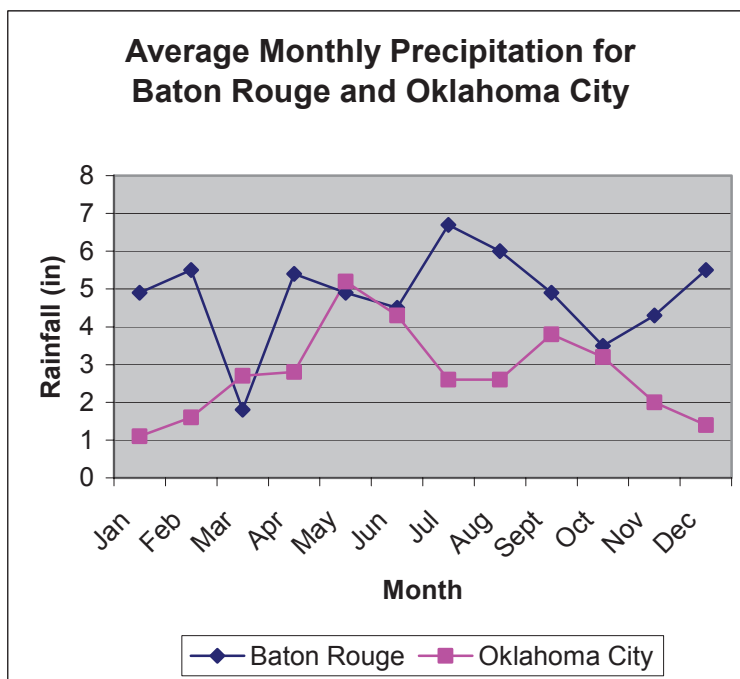
2. A car repairman charges a \$25 service fee to look at an automobile. He charges an additional \$20 for each hour (or fraction thereof) while he is working on the car. Draw a cost-time graph for three hours of work on a particular automobile.



3. Write a story about the following graph. It can be about distance-time, money, or anything else that you might think the graph may describe.



The following graph shows the average precipitation for Oklahoma City and Baton Rouge over a twelve month period.



- What is Baton Rouge's heaviest rainfall month? Oklahoma City's?
- Between which two successive months is the highest increase in rainfall in Baton Rouge? Oklahoma City?
- When is the rainfall in Baton Rouge between 5 and 6 inches?

- d. During which months of the year is the rainfall in Oklahoma City likely to be more than Baton Rouge?
- e. Which month is likely to have the least amount of rain recorded in Baton Rouge?
- f. During which two successive months does the amount of rainfall remain unchanged in Oklahoma City?
- g. For which months is the rainfall in the two cities about the same?
- h. What is the expected average rainfall in Baton Rouge for September?